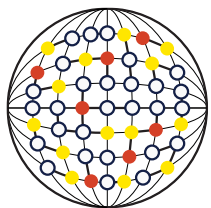


# Politics and Policy: why to wait for the window to open and how to be ready when it does

Patrick Harris



**UNSW**  
International Centre for  
Future Health Systems





exkryptt

**Aussie reverses roles  
and overtakes cyclists  
in cycle lane 😂😂**

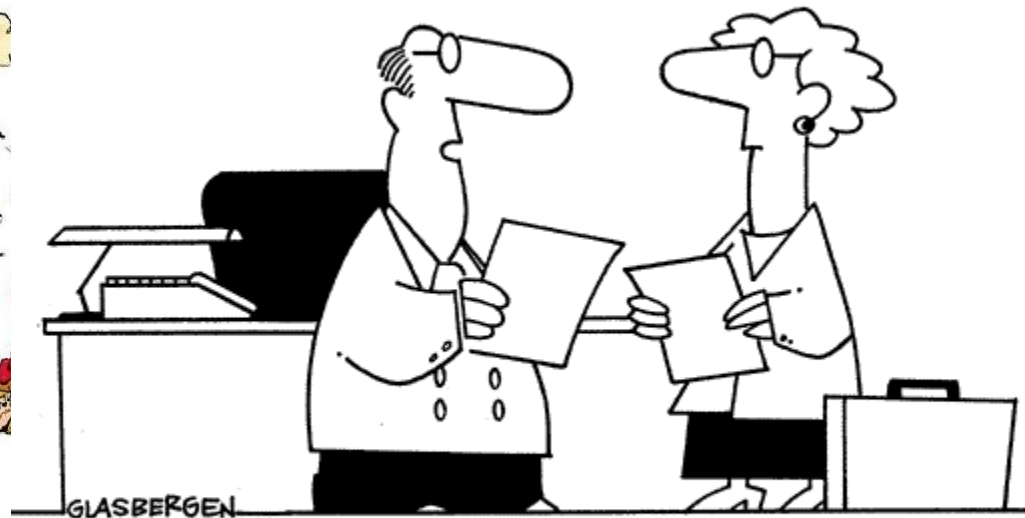


Toronto is getting rid of these  
fucking things in certain places

# Policy Politics

Policy or politics?

© 1999 Randy Glasbergen.  
www.glasbergen.com



**“Let’s form a committee to create a task force  
to develop a team to determine the fastest  
way to deal with the problem.”**

*“[politics is defined as] ... all the processes of conflict, cooperation and negotiation in taking decisions about how resources are to be owned, used, produced and distributed. Inevitably, the contours of politics are framed by the inherited institutional environment (both formal and informal), by the political culture and by the differing degrees and forms of power, which participants bring to the process, and by their interests and ideologies”.*

Leftwich (2004)

# Studying Public Policy

PRINCIPLES AND PROCESSES

Michael Howlett  
M. Ramesh  
Anthony Perl

FOURTH EDITION

OXFORD

# POLICY CYCLE HOURGLASS

## APPLIED PROBLEM-SOLVING

Problem recognition

Solution Proposal

Choice of Solution

Solution  
Implementation

Monitoring of Results



## KEY ACTORS

Policy Universe

Policy Subsystem

Govt. Decision-Makers

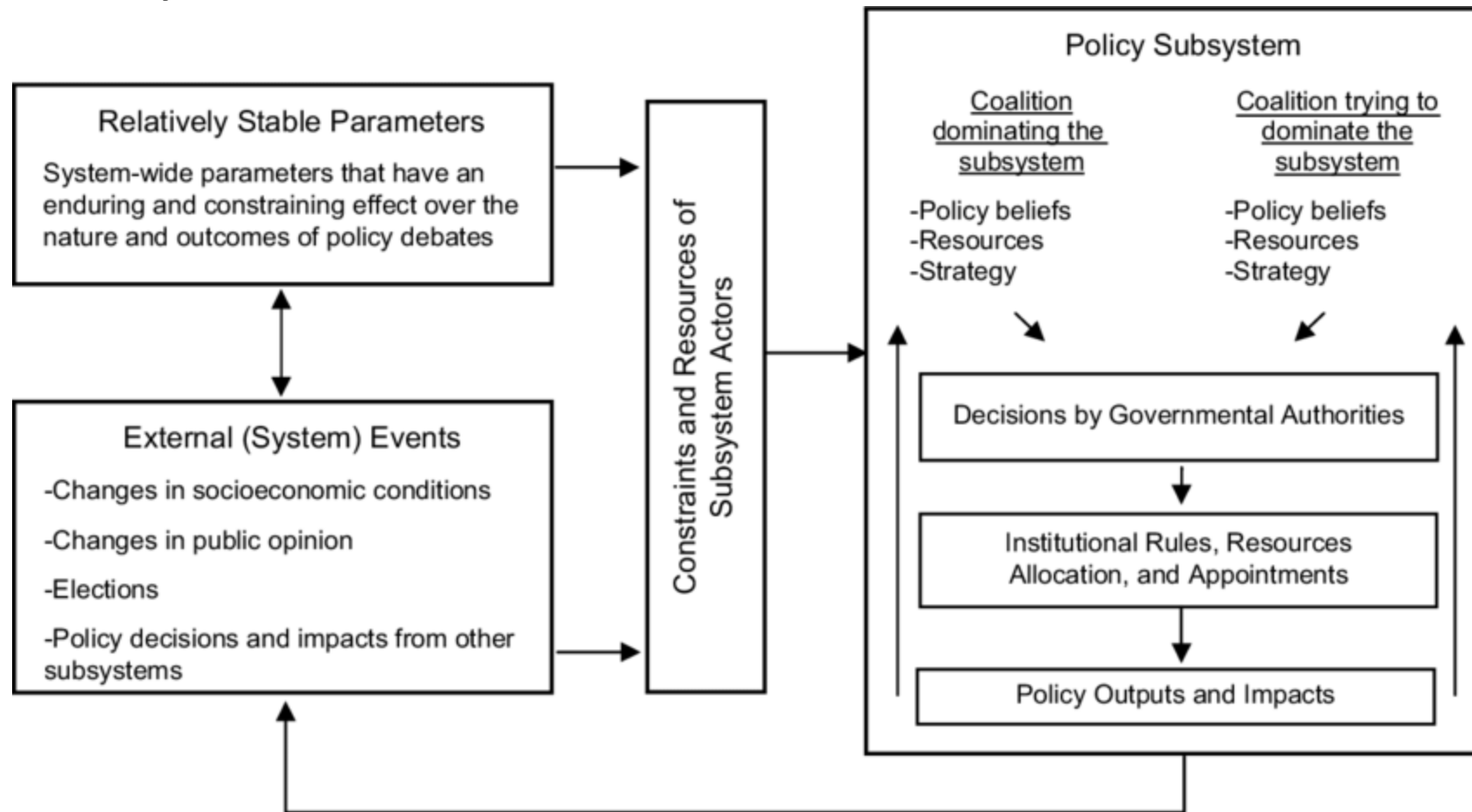
Policy Subsystem

Policy Universe

Adapted from Howlett, Ramesh and Perl, *Studying Public Policy: Policy Cycles and Subsystems*, Oxford Uni. Press, 3<sup>rd</sup> Ed. 2009



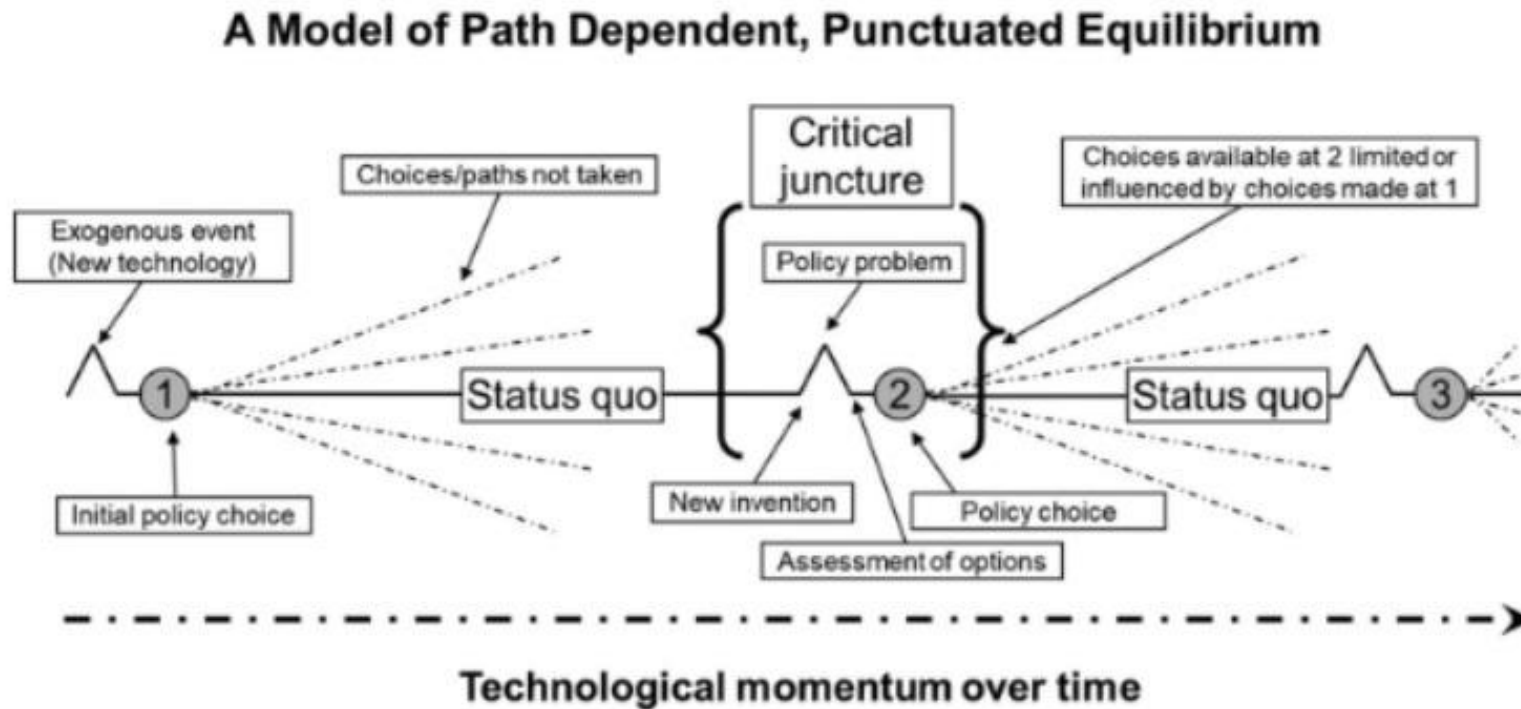
# Advocacy coalition framework



Adapted from Sabatier & Jenkins-Smith (1993).

Breton, E., Richard, L., Gagnon, F. *et al.* Fighting a Tobacco-Tax Rollback: A Political Analysis of the 1994 Cigarette Contraband Crisis in Canada. *J Public Health Pol* **27**, 77–99 (2006). <https://doi.org/10.1057/palgrave.jphp.3200060>

# Punctuated Equilibrium



**Figure 1.** Model of path dependent, punctuated equilibrium.

de Percy, M., & Batainah, H. (2021). Identifying historical policy regimes in the Canadian and Australian communications industries using a model of path dependent, punctuated equilibrium. *Policy Studies*, 42(1), 42–59. <https://doi-org.wwwproxy1.library.unsw.edu.au/10.1080/01442872.2019.1581161>

# Opening 'the window' = create change, insights from the three main policy analysis theories

	MSA	ACF	PET
Actors	Entrepreneur surfers trying to catch the wave	Coalitions for conflict	Policy monopolies
Ideas or beliefs	Ideas fight for space, need to be acceptable and salient	Deep core beliefs drive behaviour	Monopolies frame widely supported images
Rules of the game	Ambiguity creates dynamic, complex and chaotic politics	Stable institutional parameters (reflect social values) requires consensus	Negative feedback loops work against change
Wider conditions	Public mood, pressure groups, administrative turnover, clarity over issues	Public opinion, economic conditions	Monopoly opened up for scrutiny

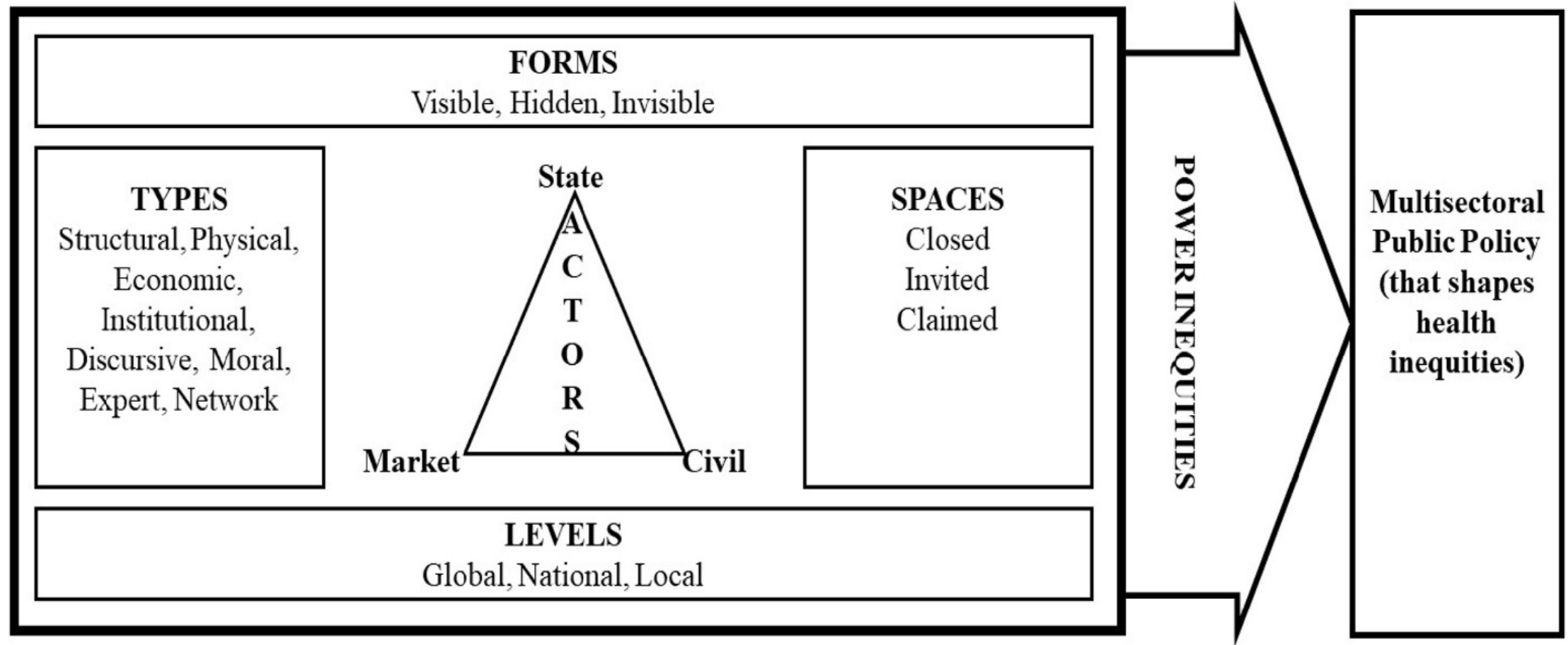
Harris, P., Kent, J., Sainsbury, P., Marie-Thow, A., Baum, F., Friel, S., & McCue, P. (2018). Creating 'healthy built environment' legislation in Australia; a policy analysis. *Health promotion international*, 33(6), 1090-1100.

# Implications for practice and strategic questions

	MSA	ACF	PET
Implications	<p>Make ideas acceptable and salient in conditions of ambiguity and chaos</p> <p>Soften up the system</p> <p>Seize the moment</p>	<p>Create competition between coalitions over core beliefs.</p>	<p>Open up close policy monopolies to wider scrutiny, and then present ideas that challenge the current monopoly</p>
Questions to ask	<p>What / who opens the agenda for slow streets?</p> <p>How are ideas positioned and considered?</p> <p>Are they salient and acceptable?</p>	<p>What is the core belief that coalitions hold?</p> <p>What is the belief system of the dominant coalition?</p> <p>How does slow streets intersect with competition between beliefs?</p>	<p>What are the policy groupings concerning slow streets?</p> <p>How can slow streets be presented as conforming to or challenge the status quo</p>

Harris, P., Kent, J., Sainsbury, P., Marie-Thow, A., Baum, F., Friel, S., & McCue, P. (2018). Creating 'healthy built environment' legislation in Australia; a policy analysis. *Health promotion international*, 33(6), 1090-1100.

# How to sustain.... Governance and power.



Friel, S, Townsend, B., Fisher, M., Harris, P., Freeman, T, Baum, F. (2021) Power and the people's health. *Social Science and Medicine*.114173

**Partners:** This project is a major collaboration with partners from Australian, NSW and Local Governments, academia, industry and community sectors.

Partners include, but are not limited to:

Australian Department of Climate Change, Energy, the Environment and Water; Australian Red Cross; Blacktown City Council; Business Western Sydney; Committee for Sydney; Endeavour Energy; Energy and Utility Services Functional Area; Green Building Council of Australia; Liverpool City Council; NSW Department of Climate Change, Energy, the Environment and Water; NSW Department of Planning, Housing and Infrastructure; NSW EPA; NSW Health; NSW Police (SEOCON); NSW Reconstruction Authority; Property Council of Australia; Resilient Sydney; Sweltering Cities; Swiss Re; Sydney Water; Transport for NSW; Western Sydney Community Forum; WSROC.



My wo



PALGRAVE STUDIES IN PUBLIC HEALTH  
POLICY RESEARCH

Illuminating Policy for Health  
Patrick Harris

# Illuminating Policy for Health

## Insights From a Decade of Researching Urban and Regional Planning

Patrick Harris

palgrave  
macmillan

palgrave  
macmillan

Open Access

BMJ Open 'Including health in systems thinking for urban planning': a narrative analysis research programme

Patrick Harris,<sup>1</sup> Sharon Friel,<sup>1,2</sup> Andrew Wilson<sup>1</sup>  
Social Science & Medicine 148 (2016) 42–51



Contents lists available at ScienceDirect

Social Science & Medicine

journal homepage: www.elsevier.com/locate/socscimed

Framing health for land-use planning legislation: A descriptive content analysis

Patrick Harris<sup>a,\*</sup>, Jennifer Kent<sup>b</sup>, Peter Sainsbury<sup>c</sup>, Anne Marie-Thow<sup>d</sup>, Peter McCue<sup>e</sup>  
http://jghpm.com  
Int J Health Policy Manag 2017, 6(1), 1–11



International Journal of Health Policy and Management

Original Article

Including Health in Environmental Assessment of Transport Infrastructure Projects: A Document Analysis

Emily Riley<sup>1a</sup>, Patrick Harris<sup>1a</sup>, Jennifer Kent<sup>1b</sup>, Peter Sainsbury<sup>1c</sup>, Anna Lane<sup>1d</sup>, Fran Smeeth<sup>1e</sup>



Contents lists available at ScienceDirect

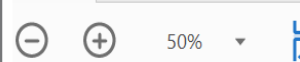
Environmental Impact Assessment Review

journal homepage: www.elsevier.com/locate/envint

Including health in environmental impact assessments of transport projects in Sydney, Australia: A critical, institutional analysis

Patrick Harris<sup>a,\*</sup>, Emily Riley<sup>b</sup>, Peter Sainsbury<sup>c</sup>, Jennifer Kent<sup>d</sup>, Fran Smeeth<sup>e</sup>  
would have gained prominence in the draft legislation through engagement with legislative change processes at the

doi:10.1016/j.socscimed.2016.04.005  
Article



Environmental policy in Sydney, Australia  
Emily Riley<sup>1</sup>

Health Promotion International, 2017, 1–11  
doi:10.1093/heapro/dax055  
Article



'Environment' legislation in Australia: A critical analysis

Peter Sainsbury<sup>2</sup>, Anne Marie-Thow<sup>1</sup>, Peter McCue<sup>3</sup>

Theories for understanding power and health equity

Emily Riley<sup>1</sup>, Sharon Friel<sup>2</sup>, Tamara Mackean<sup>3</sup>, Ashley Schram<sup>2</sup>

Contents lists available at ScienceDirect

Social Science & Medicine

journal homepage: www.elsevier.com/locate/socscimed



Sharon Friel<sup>b</sup>, Patrick Harris<sup>c</sup>, Toby Freeman<sup>b</sup>

Downloaded from https://academic.oup.com/heapro/advance-article-abstract/doi/10.1093/heapro/dax055/657192 by guest on 11 July 2019